



**“NEWS from the PEWS”**  
**The Parish of POSTLING**  
Part of the Elham Valley Group of Churches

**March  
- April  
2021**

*The Bi-monthly Newsletter of St. Mary & St. Radigund's Church, Postling*

Priest in Charge: **Rev Jane Weeks**, The Vicarage, Vicarage Lane, Elham 840219  
Hon. Curate: **Rev. Stephen Dougal** Bereforstal Farm Bungalow, Elham 840750  
Churchwardens **Peter Le Feuvre** 863780 and **Chris Reynolds** 862436  
Treasurer **John Ayris** 07770-667214 PCC Secretary **Sarah Nicholls**  
Safeguarding Officers: **Helen Calderbank and Sarah Montgomery** 863780

*If you have an item about an event in the villages that you would like included in the newsletter, please contact  
Peter Le Feuvre, Normandy, The Street, Postling. Tel. 863780 or [plefandsem@doctors.org.uk](mailto:plefandsem@doctors.org.uk)*

**Mothering Sunday and Easter in Postling**

**14<sup>th</sup> March** is Mothering Sunday. Please join us by Zoom for our service at 9.30 am. Afterwards we will meet in the beautiful churchyard at 11am for a brief celebration with poems and prayers.

*A large cross is being erected in the churchyard this Easter as a focus for our thoughts and prayers.*

On **Good Friday, April 2<sup>nd</sup>** there will be a one-hour service of readings and silence in front of the cross at 12 noon. Please bring your own seat.

**We are hoping that you would like to come and decorate the cross with flowers some time on Easter Saturday or early in the morning of Easter Day as a sign of Resurrection. These could be attached to the cross itself or placed at its foot.**

On **Easter Day, April 4<sup>th</sup>**, there will be a service of Holy Communion by Zoom at 9.30am followed by a brief service of celebration at the cross in the Churchyard at 11am

You are welcome to all of these events. The services in the churchyard will not take place if it is raining.

**All these events must be COVID secure, so please keep at least 2 metres away from others who are not in your bubble. Masks are not necessary unless you would like to enter and visit the church building.**

Following our successful wine tasting evening (a blind tasting that revealed the unforeseen merits of a £4.50 plonk!) we invite you to a Beer tasting event in your own home. Join in by Zoom on Friday 26<sup>th</sup> March

*This is how it will work:* Between 6pm and 7pm on the 26<sup>th</sup>, we will deliver to your home samples of seven different beers, accompanied by a sealed envelope with tasting notes for each one. Five descriptions will be offered for each beer, but only one will be correct. Not to be opened until 8pm

At 8pm join us all by Zoom when we will taste them together and see if we can identify the beers by matching what we are drinking with the correct description.

No prizes, just fun! *£8 per person donation to the church.*

Please do let Peter Le Feuvre know, by Friday 19<sup>th</sup> March, if you would like to take part.

**Postling quizzes!**

Our regular quiz evenings by Zoom, every other Thursday at 7.30pm, are proving to be very popular. The next dates are the 4<sup>th</sup> and 18<sup>th</sup> March.

A Zoom link is sent out the day before. Come and pit your wits against your friends and neighbours. (Please contact us if you are not yet on the circulation list and would like to be added)

## **Services in March and April**

### **Sunday 7<sup>th</sup> March**

9.30am Holy Communion By Zoom Rev Stephen Dougal

### **Sunday 14<sup>th</sup> March *Mothering Sunday***

9.30am Morning Service By Zoom Peter and Sarah

11am Informal celebration of Mothering Sunday in the Churchyard

### **Sunday 21<sup>st</sup> March**

9.30am Morning Service By Zoom Peter and Sarah

### **Sunday 28<sup>th</sup> March *Palm Sunday***

9.30am Morning Service By Zoom Peter and Sarah

### **Friday 2<sup>nd</sup> April *Good Friday***

12 noon One hour in front of the Cross. In the Churchyard (weather permitting)

### **Sunday 4<sup>th</sup> March *Easter Day***

9.30am Holy Communion By Zoom Rev Jane Weeks

11am Easter celebration at the cross in the Churchyard (weather permitting)

### **Sunday 11<sup>th</sup> April**

9.30am Morning Service By Zoom Peter and Sarah

### **Sunday 18<sup>th</sup> April**

9.30am Morning Service By Zoom Peter and Sarah

### **Sunday 25<sup>th</sup> April**

9.30am Morning Service By Zoom Peter and Sarah

### **Postling Church Flower and Cleaning Rota**

March 6<sup>th</sup> and 13<sup>th</sup> Lent- cleaning only Sue Hill and Maria Sudworth

March 20<sup>th</sup> and 27<sup>th</sup> Lent- cleaning only Jenny Haydock and Denise Burgess

April 3<sup>rd</sup> and 10<sup>th</sup> Gill Dixon

April 17<sup>th</sup> and 24<sup>th</sup> Jacqui Dixon and Annette Battersby

The Priest and Churchwardens have requested permission to set aside an area of the graveyard for the interment of cremated remains. The proposed area is a line close to the south wall of the churchyard from the yew tree to the bench and beyond to the south west corner of the graveyard. Further details may be obtained from Peter Le Feuvre, 'Normandy' The Street, Postling.

If anyone has any objection to this proposal, then please inform the Diocesan Registry before Saturday 20th March 2021: Canterbury Diocesan Registry, Minerva House, 5 Montague Close, London SE1 9BB

**Postling Action for Conservation and the Environment (PACE):** Debbie Reynolds writes:

### ***Postling Spring Wildlife***

We are grateful to be shedding our heavy coats in response to feeling the first rays of sun warming our faces. The joys of spring are already clear to see with Primroses and Early Dog Violets lining hedgerow bottoms and overwintered Brimstone butterflies, emerging from their vital winter shelter of thick winding ivy, seeking pollen before laying eggs.

This is the start of life's journey for so much of our native wildlife. We have the privilege of watching, embracing and nurturing the natural world on our doorstep. So, put away your chainsaw, hang the keys of the mulcher and put your hedge-cutter where you can't find it. Colour is the medium spring brings. The inconspicuous flower of Hazel is incredible to behold. Look carefully for the astonishingly pink tendrils reaching from the branches to catch pollen from wind buffeted lambs' tails. (pic right)

Conservation is more vital today than it has ever been. Watching this natural phenomenon is no longer a certainty. We need to actively encourage and protect. The following suggestions will help.

- Identify an area or stretch of grass now that you will leave to grow until a late cut in August. Locate it somewhere that has full sun to encourage wild flowers and insects to feed young birds and bats. Alternatively, a shaded part of the garden left to grow taller will create perfect protection for toads and frogs during the hotter summer days, whilst also protecting them from the unforgiving slash of the mower or strimmer.

'Wild' areas can look integral to your garden design if you mow a sinuous flowing edge or curve. The night-time chirping of grasshoppers is a delight to hear and has become an unfamiliar sound across the close mown landscape.

- Feed the birds! Known to conservation minded farmers as the 'hunger gap', the month of spring is a tremendously hungry time for garden and farmland birds. Before insects unleash their large broods into the food chain and flowers adorn hedgerows, birds have few food options. Remember to stop feeding whole peanuts once birds have young broods in their nests.

- Give nature a home. The log-pile. The humble pile of decaying logs could not be more important. Tucked away carefully this natural abode will be home to insects such as predatory beetles and earwigs that will Hoover up thousands of pests in your gardens. It is important to leave log piles undisturbed as some beetles live as larvae for up to 7 years before venturing into the garden.

Together, Postling Action for Conservation and the Environment can boost our local wildlife and ensure that the delights and sounds of spring DO remain a certainty.

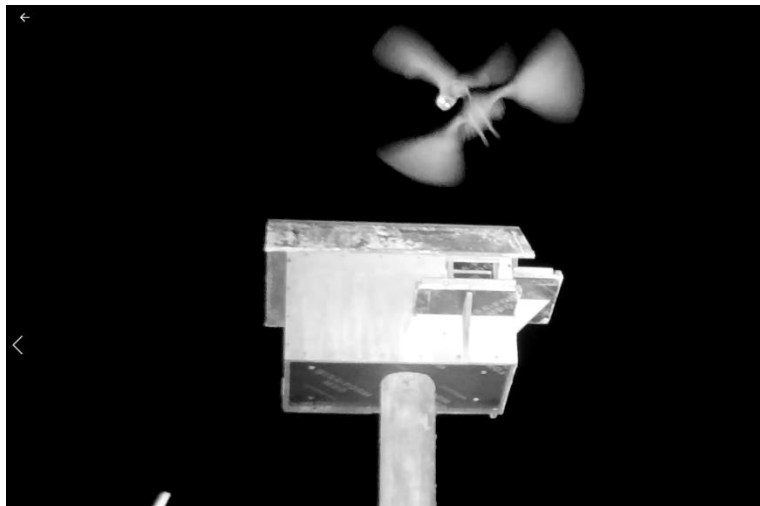
### Pent Farm News

Temporary verge protection posts have been installed along Pilgrims Way. The impact of verge creep is incredibly devastating on wildlife. Not only do the verges lose their value as wildlife corridors and food larders, but the silt washing into streams is heavily polluting. Many freshwater fish and aquatic insects are killed in silt laden watercourses. Please work with us at Pent Farm to protect the rural integrity of our lanes and the wider health of the environment.





In other news, a pair of Barn Owls have taken up residence on the farm. We will keep you updated through the year with how they get on. Keep that grass long!



It is now bird-nesting season, so please do keep all dogs under close control or on leads and away from the steep banks of Pent Downs where the skylarks and meadow pipits nest. Thank you!